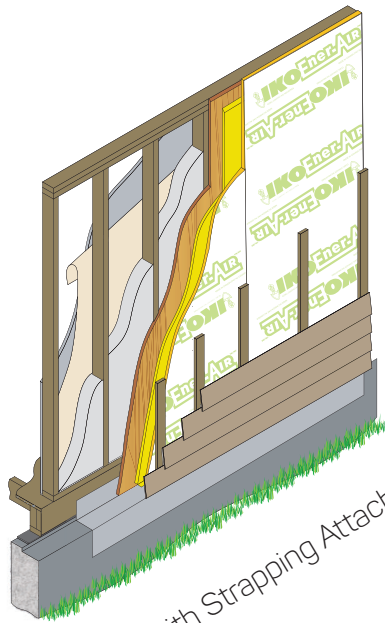
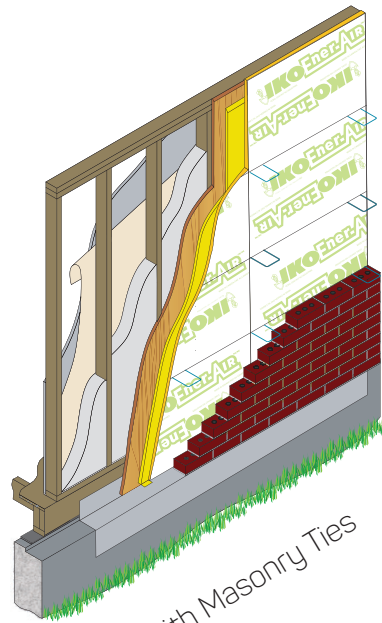


# Ener-Air™

BUILDING ENVELOPE INSULATION



Cladding with Strapping Attachment



Cladding with Masonry Ties

## Performance as a Sheathing

- **Polyiso has the highest R-value per inch** of any rigid foam board insulation. Increased thermal resistance improves wall energy efficiency performance.
- **Effective strategy to reduce initial construction costs.** The higher thermal values per inch of Ener-Air insulation sheathing means that it requires less space than less efficient insulation to deliver the same level of performance.
- **User-friendly.** Coated glass fibre facers on both sides of the sheathing provide moderate abuse-resistance on the job site. Ener-Air is lightweight & easy to cut, thus reducing labour costs on site. Stud and fastener line indicators improve accuracy of installation.
- **Provides versatility.** Coated glass fibre facers provide the long term moisture resistance necessary for various wall applications. The facers are also compatible with most solvent-based materials.
- **Has a uniform thickness** for consistently maintaining air space requirements in wall applications.
- **Can be pre-cut** at IKO's factory to the size you need with IKO AccuCut™ service.<sup>1</sup>
- **Ener-Air could work as a Weather-Resistive Barrier (WRB) for exterior walls.** When detailed with IKO AquaBarrier™ VP Tapes the Ener-Air system can be a code-compliant, vapour-permeable WRB assembly for exterior walls, thus fulfilling two jobs at once and eliminating the need for a building wrap.

### Codes & Compliances

#### ASTM E84

Flame Spread Index < 75  
Smoke Density Index < 450

#### CAN/ULC S102

Flame Spread Index (Canada) < 500

ASTM	CAN/ULC	ASTM	CAN/ULC
C1289	S704	E2357 <sup>2</sup>	S742
Type 2	Type 1	Pass	Class A1
Class 1	Class 3		
Grade 1			

Available in 4' x 8' and 4' x 9' boards in 12 mm (0.5"), 16 mm (0.625"), 18 mm (0.75"), 25 mm (1.0"), 38 mm (1.5"), and 50 mm (2.0") thicknesses. Other sizes are available upon request as a special order.

<sup>1</sup>Please refer to "IKO AccuCut™ Guide" for more information on this service.

<sup>2</sup>When joints & penetrations detailed using AquaBarrier Tapes according to IKO specifications.

**Note:** The information in this literature is subject to change without notice. IKO and Roofmart assume no responsibility for errors that may appear in this literature. | 02/2019.

Distributed by



www.roofmart.ca

Manufactured by



www.iko.com